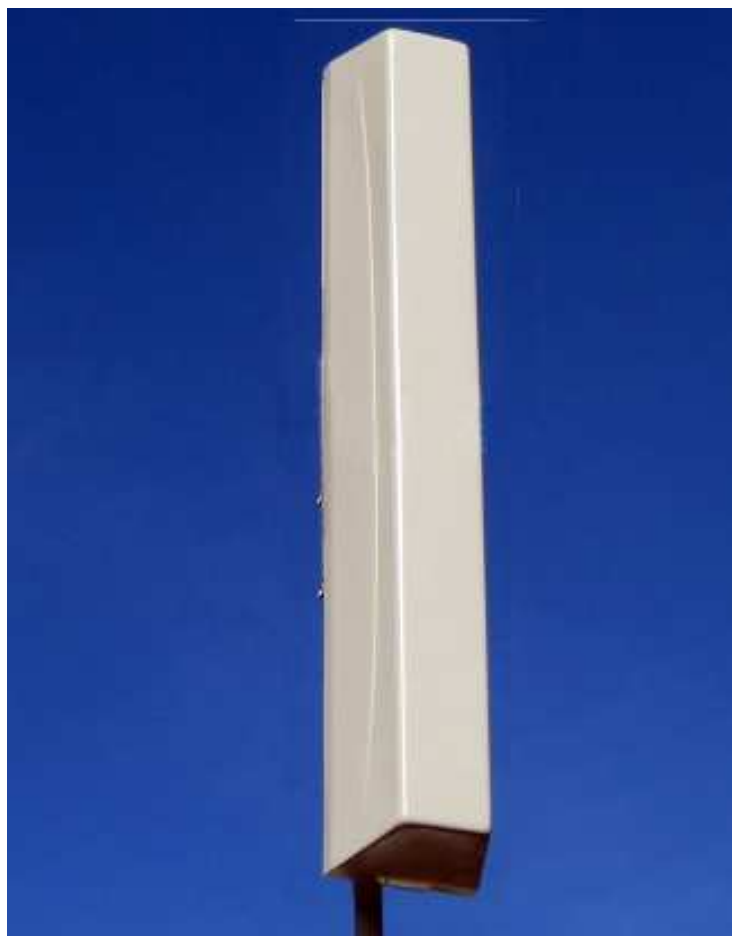


SCCP-E 2x6016

Dual (2x) Circularly Polarized log-periodic antenna

Features

- ❑ Transmit Diversity Gain
- ❑ Can be configured to combine space & polarization diversity
- ❑ Outstanding performance over the entire band (800 - 900 MHz)
- ❑ Excellent Axial Ratio
- ❑ Optimized for 4G & 3G systems
- ❑ Low intermodulation
- ❑ Improved Side-to-side rejection
- ❑ Fading reduction
- ❑ Excellent isolation between ports



Electrical specifications

Frequency range:	800-900 MHz
Impedance:	50 ohm
Connector type:	7/16 Din
Return loss:	18 dB
Polarization:	Circular
Gain ea. port [Circular]:	2x16 dBdC
Gain ea. port [Linear]:	2x13 dBdL
Axial Ratio:	2 dB
Isolation between ports (TX band):	30 dB
Front-to-back ratio:	30 dB
Intermodulation (2x20W):	IM3 150 dB IM5 160 dB IM7/9 170 dB
Power rating:	2x 500 W
H-plane (-3 dB point):	2x 55°
V-plane (-3 dB point):	2x 9°
Lightning protection:	DC grounded

Mechanical specifications

Overall height:	86 in	[2184 mm]
Width:	14 in	[356 mm]
Depth:	10 in	[254 mm]
Weight (excluding brackets):	40 lbs	[18 Kg]
Wind load measured up to:	150 mph	[240 Km/h]
Wind area (side of antenna):	8.36 sq. ft.	[0.78 sq.m]
Lateral thrust at 113 mph/ 180 Km/h (worst case):	427 lbs	[1900 N]

Materials

Radiating Elements:	Aluminum
Transformer (Power distribution)	Ceramic PCB
Chassis:	Aluminum
Radome:	Grey Fiberglass/PVC
Mounting bolts:	Stainless steel

The SCCP-E 2x6016 is made in the U.S.A.