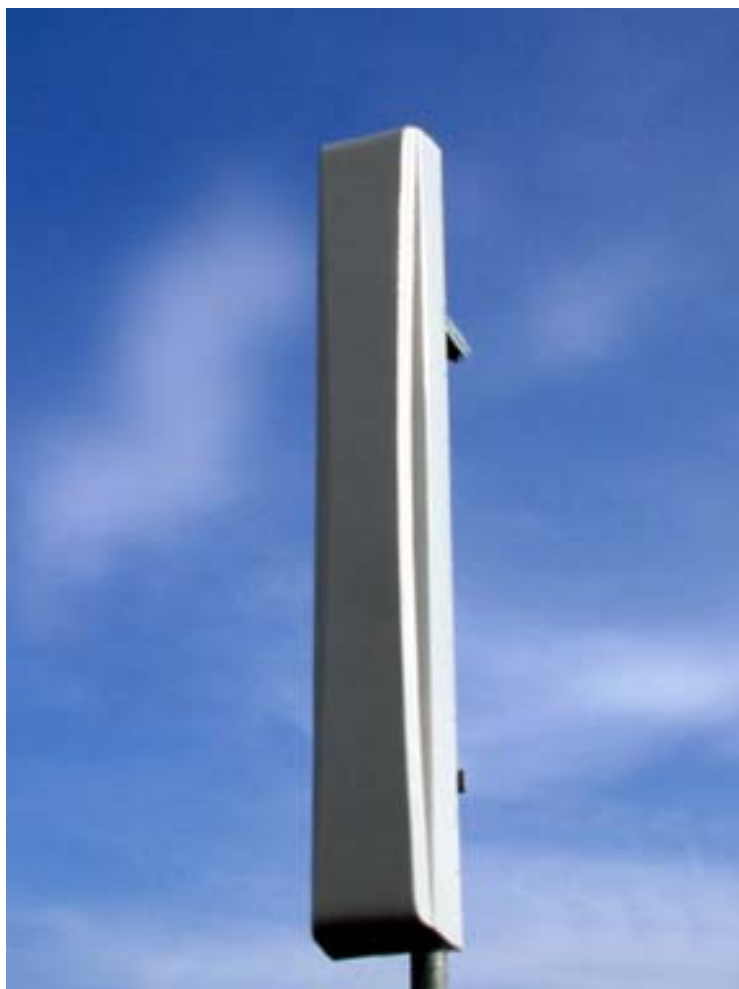


# SPCP 2x6516

Dual(2x)Circularly Polarized log-periodic antenna

## Features

- ❑ Small size
- ❑ Optimized for combined space & polarization diversity
- ❑ Outstanding performance over the entire band (1850 - 1990 MHz)
- ❑ Excellent Axial Ratio
- ❑ Suitable for CDMA / GSM / 3G
- ❑ Low intermodulation
- ❑ Improved Side-to-side rejection
- ❑ Upper side-lobe suppression
- ❑ Rugged design



## Electrical specifications

Frequency range:	<b>1850-1990 MHz</b>
Impedance:	<b>50 ohm</b>
Connector type:	<b>7/16 Din</b>
Return loss:	<b>18 dB</b>
Polarization:	<b>Circular</b>
Gain ea. port [Linear]:	<b>2x11 dBdL</b>
Gain ea. port [Circular]:	<b>2x16 dBiC</b>
Axial Ratio:	<b>2 dB</b>
Front-to-back ratio:	<b>25 dB</b>
Isolation between antennas:	<b>40 - 60 dB</b>
Intermodulation (2x20W):	<b>IM3 150 dB</b> <b>IM5 160 dB</b> <b>IM7/9 170 dB</b>
Power rating:	<b>2x 300 W</b>
H-plane (-3 dB point):	<b>2x 58 - 70°</b>
V-plane (-3 dB point):	<b>2x 12 - 13°</b>
Lightning protection:	<b>DC grounded</b>

## Mechanical specifications

Overall height:	<b>59 in</b>	<b>[1498mm]</b>
Width:	<b>8.5 in</b>	<b>[216 mm]</b>
Depth:	<b>5.5 in</b>	<b>[140 mm]</b>
Weight (excluding brackets):	<b>20 lbs</b>	<b>[9 Kg]</b>
Wind load measured up to:	<b>150 mph</b>	<b>[240 Km/h]</b>
Wind area (front of antenna):	<b>3.48 sq. ft.</b>	<b>[0.32 sq.m]</b>
Lateral thrust at 113 mph/ 180 Km/h (worst case):	<b>178 lbs</b>	<b>[791 N]</b>

## Materials

Radiating Elements:	<b>Silver plated brass</b>
Transformer (Power distribution)	<b>Ceramic PCB</b>
Extrusion:	<b>Aluminum</b>
Radome:	<b>Grey PVC</b>
Antenna bolts:	<b>Stainless steel</b>

*The SPCP 2x6516 is made in U.S.A.*