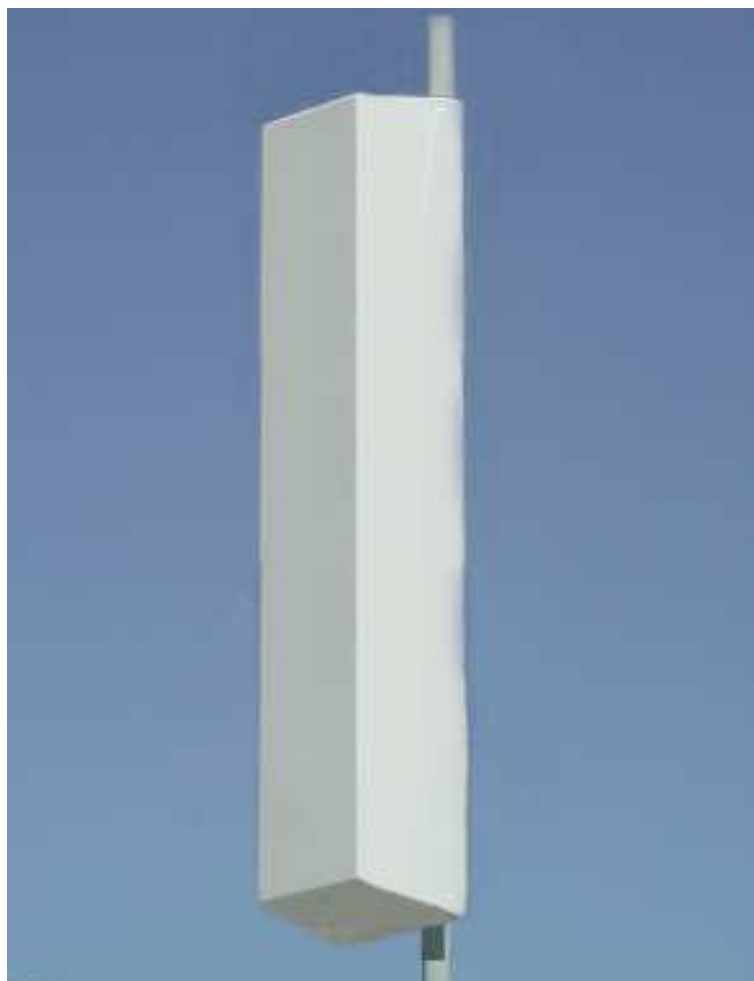


SLXW 5514

698 - 900 MHz Cross pol. log-periodic antenna

Features

- ❑ Small size
- ❑ Improved Side-to-side rejection
- ❑ Suitable for CDMA/GSM/3G/4G
- ❑ High return loss
- ❑ Low intermodulation
- ❑ High front-to-back ratio
- ❑ Dramatically improved signal to interference performance
- ❑ Upper side-lobe suppression
- ❑ Rugged design
- ❑ Outstanding performance over the entire band (698 - 900 MHz)



Electrical specifications

| | |
|------------------------------|----------------------|
| Frequency range: | 698 - 900 MHz |
| Impedance: | 50 ohm |
| Connector type: | 7/16 Din |
| Return loss: | 20 dB |
| Polarization: | +/- 45° |
| Isolation between ports: | 40-60 dB |
| Gain: | 14 dBd |
| Front-to-back ratio: | > 30 dB |
| Power rating: | 500 W |
| H-plane (-3 dB point): | 48 - 54° |
| V-plane (-3 dB point): | 15 - 18° |
| Upper side-lobe suppression: | 18 dB |
| Intermodulation (2x20W): | IM3 150 dB |
| | IM5 160 dB |
| | IM7/9 170 dB |
| Lightning protection: | DC grounded |

Mechanical specifications

| | | |
|---|--------------------|--------------------|
| Overall height: | 80 in | [2032 mm] |
| Width: | 14 in | [356 mm] |
| Depth: | 9 in | [229 mm] |
| Weight (excluding brackets): | 36 lbs | [16.3 Kg] |
| Wind load measured up to: | 150 mph | [240 Km/h] |
| Wind area (side of antenna): | 7.8 sq. ft. | [0.72 sq.m] |
| Lateral thrust At 113 mph/ 180Km/h (worst case): | 397 lbs | [1767 N] |

Materials

| | |
|----------------------------------|----------------------------|
| Radiating Elements: | Aluminum |
| Transformer (Power distribution) | Ceramic PCB |
| Chassis: | Aluminum |
| Radome: | Grey Fiberglass/PVC |
| Mounting bolts: | Stainless steel |

The SLXW 5514 is made in the U.S.A.