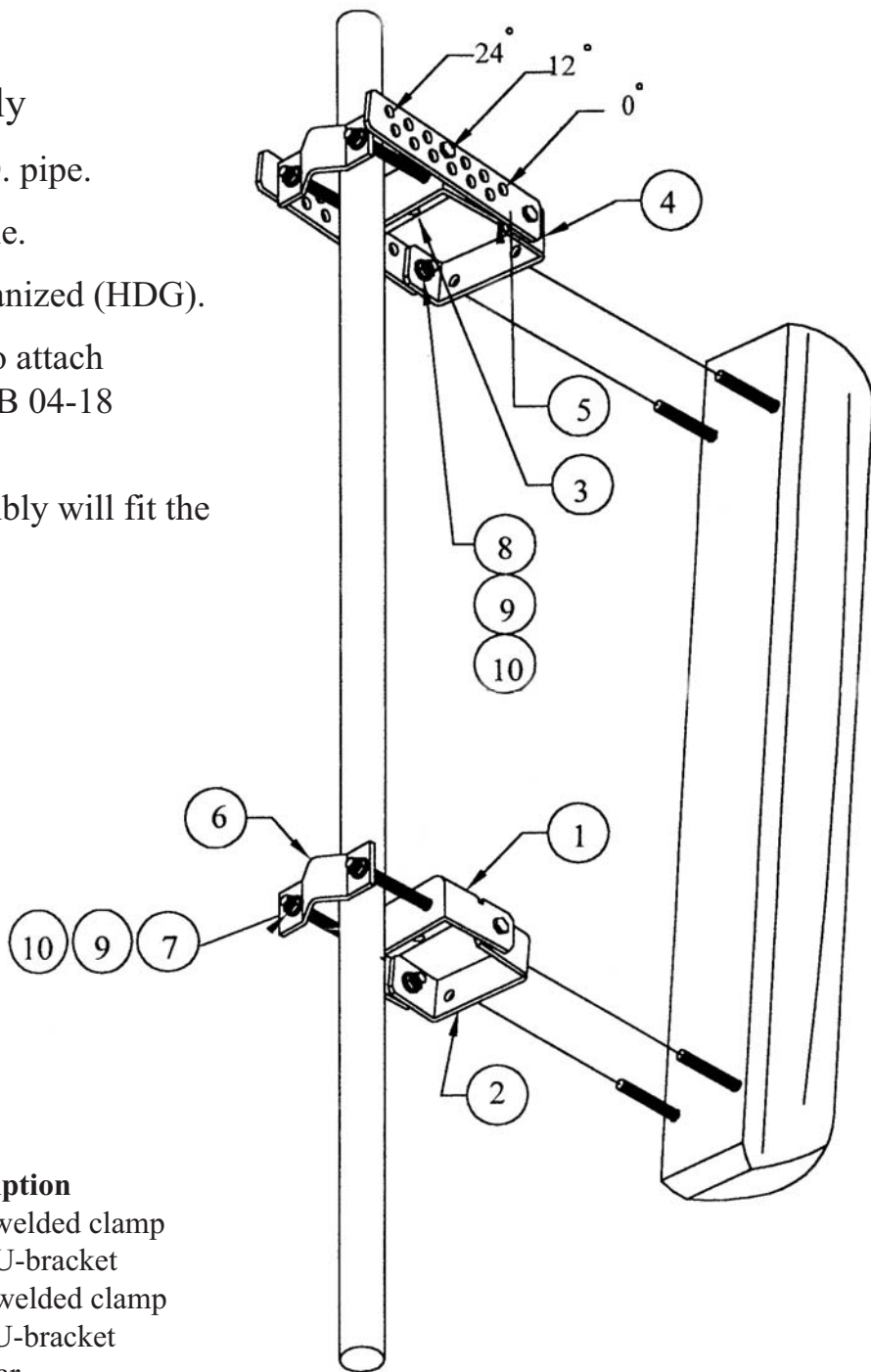


SB 02L-24 Bracket Assembly

- 1) Clamp adjusts for up to 3" O.D. pipe.
- 2) Adjusts one degree (2°) per hole.
- 3) All material is hot dipped galvanized (HDG).
- 4) Please use nuts from antenna to attach antenna to down-tilt bracket (SB 04-18 Bracket Assembly)
- 5) The SB 02L-24 Bracket Assembly will fit the following Swedcom antennas:

- SC 6011
- SC 9009
- SP-E 5014
- SP 6013



List of materials

Item	Qty.	Part No.	Description
1	1	04L-01	Long welded clamp
2	1	04L-02	Short U-bracket
3	1	04L-03	Short welded clamp
4	1	04L-04	Long U-bracket
5	2	04L-24	Side bar
6	2	04L-05	V-clamp
7	4		3/8" x 4" tap bolt
8	6		3/8" x 1" tap bolt
9	10		3/8" hex nut
10	10		3/8" lockwasher

The SB 02L-24 Bracket Assembly
is made in the USA.